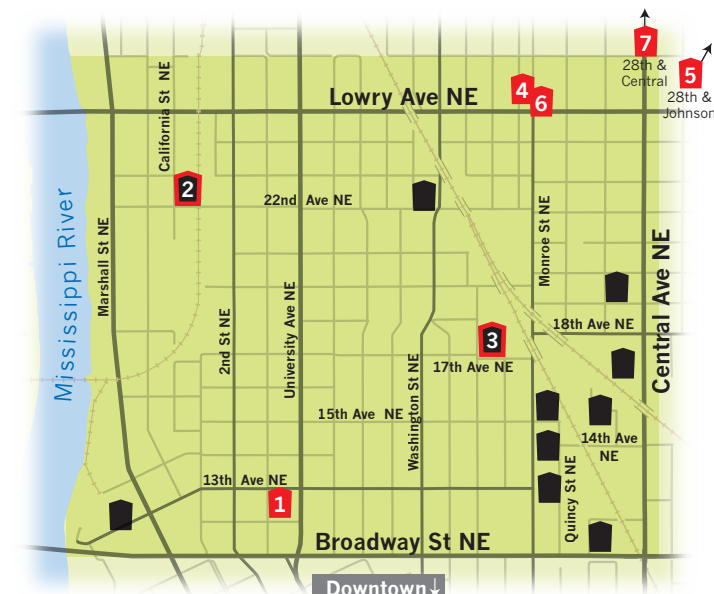




arts INSIGHTS

A page about artists and The Arts at Work by the Northeast Minneapolis Arts District in collaboration with the Northeaster.



SPONSORS

- | | |
|----------------------------|-----------------------------------|
| 1 The Anchor Fish & Chips | 6 Potekglass |
| 2 California Building | 7 Turbo Tim's Anything Automotive |
| 3 Casket Arts Buildings | 8 Michael Gacek, Edina Realty |
| 4 Clay Squared to Infinity | 9 Michael Rainville, 3rd Ward |
| 5 Davis Law Office | |

Ready for influx of new artists, business

by Josh Blanc

Over the past couple years we have reported on the vast expansion of the number of artists in the Northeast Minneapolis Arts District to 18 art buildings and 1,200 artists working within its boundaries. It is a validation to the 30 artist visionaries who created Art-A-Whirl® in 1996. Their idea of creating a self-sufficient arts community has paid off in continuing opportunities for artists to reach their full potential. We now are on the cusp of the second full phase of the Arts District.

Artspace is expanding the usable space in the 13-acre, ten-building Northrup King site with two buildings to be converted into 84 units of live/work housing for artists. Future plans call for rehabbing four more shuttered buildings into artist-focused spaces. Construction is ex-

pected to start later this year on the \$43 million project.

What this means is the Northeast Minneapolis Arts District is preparing for more artists to become part of the community. The Arts District board has been working with the city officials, businesses and community leaders for years toward better planning and communication for any building projects, to make sure they are arts centric.

Focusing any industrial land to be used for its intended purpose of maker spaces (arts or manufacturing) will ensure the community is getting the highest and best uses from its industrial land, creating more jobs and opportunities for the whole community.

As artists prepare for the annual Art-A-Whirl® in May, reflect on this 25-plus-year tradition as a testament to all those who have supported and continue to support the Northeast arts community. So much more is coming, and we are looking forward to the amazing experiences it will create.

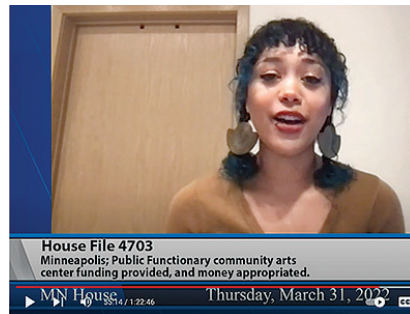
For local arts calendar items, see page 15 of this Northeaster. Congratulations, Loretta Bebeau on her one-person show at NE Sculpture|Gallery Factory!

Public Functionary seeks arts center funds

Tricia Heuring and Leslie Barlow of Public Functionary went before the Minnesota House Capital Investment Committee on March 31 to ask for \$2 million dollars to create an art center in the NE Minneapolis Arts District.

You can watch the testimony on YouTube starting at 51:11 - HF4703 (Rep. Her) Minneapolis; Public Functionary community arts center funding provided, and money appropriated.

(Screen capture from video)



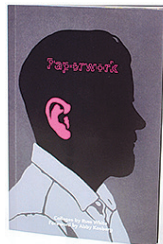
Art books abound, compilation on web

by Josh Blanc and Remo Campopiano

Over the years many books have been written and published by or about artists who work out of the Northeast Minneapolis Arts District.

Photographer Sarah Whiting published "Open Studio: Faces and Stories of Northeast Minneapolis Artists," with great images of artists in their studios and short stories based on interviews she conducted with them.

Many are books on important shows that showcased



Paperwork (cover) by Russ P. White

their works long after the shows went down. Piotr Szyhalski's Labor Camp Report book was a specular book of all the images he created during the pandemic and government hyperbole. With the new series of sketch books being published by a new group of artists, they will have their work in print and collected in book form.

While books sometimes can be seen as old fashioned in this phone-obsessed age there is something luscious when holding an art book with its analog tactile images staring at you with all your attention.

The Arts District website will be working on a new page to highlight these historic books and as new ones are published they will be added for posterity to showcase the works they produce.

ACW's Noble Truths: The Art of the Flower



She Sings of Spring by Dyan J. Padgett

Noble Truths is a new Art to Change the World project that invites visitors to an artist's studio. Each artist will approach the studio visit in their own unique way. Some may demonstrate techniques or finished works, others might ask for a critique of a piece in progress, all will invite thought and conversation.

Each of these six individuals will be open to answering your questions about what it is like to be a working artist today, and why they choose the path they did - medium, style, and a creative life.

First up: The Art of the Flower: Why Nature is Better Than Tinder, April 20, 2022, 6 p.m. 1500 Jackson NE, Studio 200. Host Dyan Padgett, a classical realist painter specializing in floral works, will open her studio for a discussion of technique and philosophy. Padgett seeks the remarkable in ordinary objects and everyday life - finding beauty in the quotidian. "Nature is often at the forefront of my subject matter as it is all around us and deep within us," Padgett says, "My training focuses on skills learned and perfected through the age-old Atelier method - artistic instruction passed from master painter to student, melding academic draftsmanship with the color influence of the Boston School."

Free but registration required, link in this article at: www.northeastminneapolisartsdistrict.org

MSAB recipient

Loretta Simonet of Northeast was awarded a Minnesota State Arts Board Creative Support for Individuals Grant. Her band, "Curtis & Loretta," will make a new recording of original songs inspired by the pandemic and give three CD release concerts, plus a virtual concert.

Gudrun Lock: The Nature of Shoreham Yards

Northeast artist Gudrun Lock's work is at the Target Studio for Creative Collaboration through May 15 at the Weisman Art Museum at the University of Minnesota. Admission is free, info at wam.umn.edu

This installation features the in-process work, research and explorations of a motley collective of thinkers and makers. The focus of these efforts are the buffers of an active 230-acre train and trucking facility in Northeast Minneapolis, Shoreham Yards. Both polluted and full of life, the buffers interface in dynamic ways with the neighborhoods surrounding them, and are potent sites of potential transformation.

Reeb is new gallery partner



Jodi Reeb, co-owner of Kolman & Reeb Gallery

Well-known Minnesota artist Jodi Reeb has joined Anita Sue Kolman as a partner and owner of the newly renamed Kolman & Reeb Gallery. "With this change, you can expect a continuation of the best of past gallery activities, including contemporary art exhibitions from our gallery artists and from our new Project Space Grant Program," they announced in a press release.

Reeb has been an artist and a sales associate with the gallery for over ten years and a full-time artist, curator, and teacher in Minneapolis for over 25 years. "Gallery patrons relish Jodi's enthusiasm and energy, and her passion for art," said Kolman.



New Classes & Glass Supplies Are Posted Every Week

612-281-7243 • 2505 Howard St. NE
potekglass.com



CLAY SQUARED TO INFINITY LLC
612-781-6409
claysquared.com



ORDER A FREE CATALOG

Handmade Tile



Indoor dining!

302 13th Ave NE
Tues - Thurs: 4-8
Fri: 4-9
Sat: Noon - 9
Sun: Noon - 8

Reservations required
Online orders for pickup.
theanchorfishandchips.com

WORKING FOR WARD 3



Michael Rainville
Your Common-Sense Voice at City Hall

At Your Service
Michael.Rainville@minneapolismn.gov

Prepared and paid for by the Rainville Volunteer Committee • PO Box 18753, Mpls, MN 55418

SOLD 2130 California St NE

987 SOLDS!
Contact me for your **FREE home valuation!**

Michael Gacek
[@EdinaRealty.com](http://EdinaRealty.com)
612-750-6234

Northeaster since 1958
Realtor® since 1985

Google me!



DAVIS LAW OFFICE

Small Business • Real Estate
Wills & Estates
2825 Johnson St. NE
612-293-9308
davismeansbusiness.com

ART - FOOD
LIVE MUSIC



TURBO MAY TIM'S 21
Anything Automotive 12-8PM

OPEN SECOND SATURDAY EACH MONTH 11-4 pm



CALIFORNIA BUILDING
2205 California St. NE, MPLS, MN 55418
californiabuilding.com



casketArts
where art works

Now open for
2econd Saturdays
11am - 4pm
Open studios every month

681 17th Ave Northeast
casketArts.com