

Northeast Arts Insights

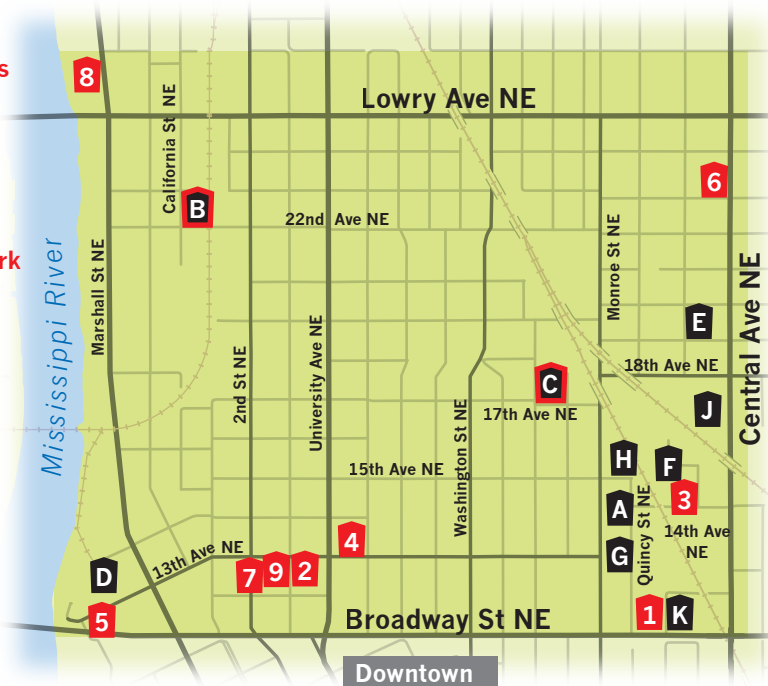


The Arts at WorkSM

- 1 Adsit Architecture
- 2 The Anchor Fish & Chips
- 3 Art Force
- 4 The Barber Sharp
- 5 Clay Squared to Infinity
- 6 Language Central
- 7 Metro Cable Network
- 8 Siwek Lumber & Millwork
- 9 Two12 Pottery & Gifts

- A Architectural Antiques
 B California Building
 C Casket Arts Buildings
 D Grain Belt Complex
 E Jackson Flats
 F Northrup King Building
 G Q.arma Building
 H Solar Arts Building
 J Thorp Building
 K Waterbury Building

Red indicates page sponsors, Black indicates major buildings



Announcing Art Force Academy
 A Learning Community for Art Enthusiasts,
 Art Consultants & Artist Entrepreneurs
 Visit www.ArtForce.Academy

Adsit Architecture & Planning
www.adsitap.com
 807 Broadway St. NE, Suite 114

SIWEK
 LUMBER & MILLWORK INC.
 MINNEAPOLIS 612-781-3333 JORDAN 952-492-6666
siweklumber.com

Handmade Tile
CLAY SQUARED
 TO INFINITY
www.claysquared.com

The Barber Sharp
 349 13th Ave. NE • 612-315-5985
 Walk-ins always welcome! Appointments accepted.
 Sun-Mon CLOSED • TWTh 9-7 • Fri 9-5 • Sat 8:30-3

The Anchor
 302 13th Ave NE
 (612) 676-1300
 Open
 Tue-Th 4 - 10pm
 Fri 4 - 11pm
 Sat* 10am - 11pm
 Sun* 10am - 10pm
 Closed Mondays
 *Breakfast only Sat & Sun from 10am - Noon

LANGUAGE CENTRAL
www.languagecentral.us
 2300 Central Ave. NE • 612-315-2058
Learn to speak Spanish!
 Classes and conversation at 3 levels.
 Chinese also available
 ESL, TOEFL & Citizenship **start anytime**

california building
 2205 California St. NE
californiabuilding.com

First Thursdays at casketArts
 Open studios 5-9pm
 681 17th ave northeast
casketarts.com

Airport Commissions NE Artisans



by Josh Blanc and Karen Wilcox

Mercury Mosaics (mercurymosaics.com), Sightline Tile (www.sightlinetile.com), and Sheryl Tuorila Fine Art Tile (sheryltuorila.com) were recently awarded commissions by The Metropolitan Airports Commission (MAC) to create tile and glass murals for the Minneapolis – St. Paul International Airport restrooms as part of a \$12 million, three-year airport renovation project.

Minnesota, and specifically the Northeast Minneapolis Arts District, is home to one of the largest concentration of handmade tile and mosaics artisans in the country (Handmade Tile Association, LLC).

With "Minnesota Landscape" as the concept and local talent as the resource, MAC expanded its plan to welcome travelers to Minnesota and showcase the Minnesota experience with local food, music, and art. For more info: <http://airportfoundation.org/programs-services/arts-culture/commissioned-artwork/restrooms/>

The Northeast Arts District artists each create bold and colorful glass and tile work in a unique style with personal interpretations of local and statewide iconography.

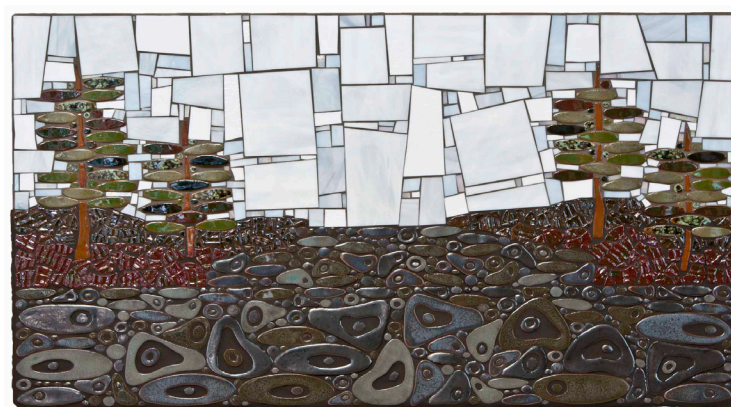
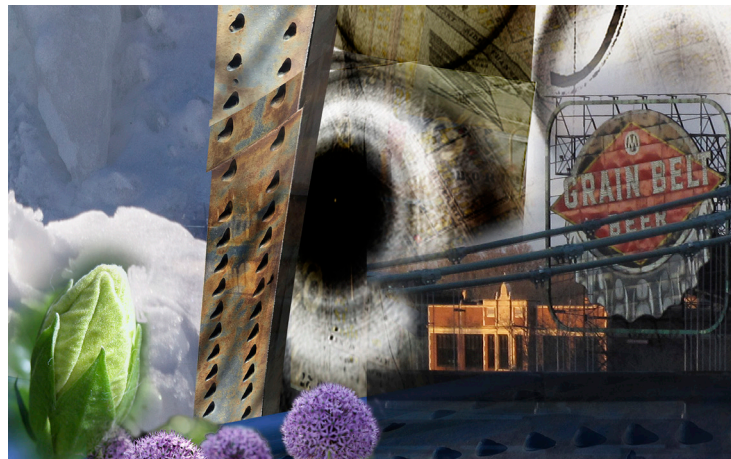
Amy Baur and Brian Boldon of Sightline Tile are designing a mural with area photographs fused to glass featuring Northeast Minneapolis.

Sheryl Tuorila has traveled throughout Minnesota to research the beauty of our natural landscape. She has created a body of handmade tile work for her mural.

The Mercury Mosaics mural was installed in the airport mall in March. Mercedes Austin says that her team Caron Bell and Satori Tile, "built a design focusing on the active Minnesota lifestyle with biking, canoeing and the lakes."

Sheryl Tuorila Fine Art Tile, Sightline Tile, and Mercury Mosaics will be open to the public during First Thursdays open studios and Art-A-Whirl. Stop by, talk to the artists, and see their work in progress.

"First impressions are important. That's why art is a major part of MSP Airport's restroom facelift," states the Airport Foundation website. Over 300 restrooms (each restroom gets used an estimated 7,000 times a day, according to MSP) will be refurbished as "state of the art 'welcome' centers, introducing travelers to our state and its vibrant, eclectic arts community."



Mercury Mosaics tile mural in process, above left. Sightline Tile sample of mural, at top. Sheryl Tuorila - Gunflint Lake Mosaic, above. Photos courtesy of the artists.

Twin Cities Performance Artist: Jaime Carrera dies at 43

by Karen Wilcox

Jaime Carrera, the provocative improvisational performer, known for his biting satire and boisterous humor, died in his sleep at age 43 on Monday, March 21 from an undiagnosed heart condition complicated by a severe respiratory illness.

Carrera, born in Mexico, was well known in the Twin Cities art scene. Often performing in the nude, he integrated kitsch, high drama, and wisecracks to impart deep, personal convictions and life lessons. His series of

performance pieces *Terrible* lambasted icons of popular culture. Carrera's work is nationally and internationally acclaimed.

In August 2015 Carrera created the sound score and costumes for the performance-art concert *Neither* at Public Functionary. Caitlin Karolczak and Carrera, who she considers to be her "performance art mentor," collaborated on a five-hour endurance performance at The Grain Belt Bottling House during Art-A-Whirl in 2012.

www.mnartists.org/jaime-carrera

Art-A-Whirl needs volunteers

NEMAA is looking for volunteers to assist during Art-A-Whirl, the annual open studio art tour, in Northeast Minneapolis May 20-22 and prior to the event. More than 100 volunteers will be needed for Art-A-Whirl and the Art-A-Whirl Silent Auction Fundraiser.

A fun way to participate in this beloved event, volunteer shifts take place from April 30 to May 23.

Tasks include distributing the Artist

Directory & Guide, helping with the Silent Auction, guiding on the trolleys, greeting at the Art-A-Whirl information booths and Silent Auction. There will be one-hour volunteer orientation sessions with free Art-A-Whirl T-shirts and refreshments at Betty Danger's Country Club in May.

For more detail and to sign up, go to www.NEMAA.org/art-a-whirl/volunteer.

MCN6.org
 SUPPORTS
 NE ARTS DISTRICT
 WATCH IT NOW

TWO12 POTTERY & GIFT GALLERY
 ONE-OF-A-KIND POTTERY, ART, JEWELRY AND MORE
 212 13th Ave NE Mpls
 612-331-1556
www.two12pottery.com