



The Arts at WorkSM

You'll see, in these monthly pages, the Arts District map with red highlights for *Northeast Arts Insights* page-sponsoring businesses, the multi-tenant art buildings located in black, the outlines mimicking the icon of the arts district logo. Thanks to Nat Case, InCase LLC, for the map design.

The printed *Northeaster* and www.MyNortheaster.com will make a point of noting events as being "in the Northeast Minneapolis Arts District," in our "Northeast Experience" section. Announcements from all arts venues in/near Northeast welcome at contact@MyNortheaster.com.

The Northeast Minneapolis Arts District board and the *Northeaster* view the newspaper's readers as natural ambassadors for the Arts District. This page will multiply and add dimension to our commitment to arts coverage. — Margo Ashmore
Northeaster Publisher



Congratulations, Pete Driessen, a *City Pages* artist of the year 2015. Photo: Franconia Boat Tower, which becomes a waterfall in rain. Driessen's Northeast studio is at the Casket Arts; he also has an alternative gallery at his south Minneapolis home. Photo courtesy of the artist

Northeast Arts Insights

The Arts at Work in the Northeast Minneapolis Arts District

What is the difference between NE MPLS ARTS DIST (Northeast Minneapolis Arts District) and NEMAA (Northeast Minneapolis Arts Association)?

NEMAA was founded by a small collective of artists in 1995. As a nonprofit member-supported organization, NEMAA currently has over 700 members and produces Art-A-Whirl, the Fall Fine Arts Show and Wintertide, a bi-annual member show. They also produce the annual NEMAA catalog prior to Art-A-Whirl; their deadline for inclusion is Feb. 1.

Northeast Minneapolis Arts District was officially declared the first Arts District in the City of Minneapolis in the Arts Action Plan of 2003. The Arts District is a designated section of Northeast bordered by the Mississippi River on the west, 26th Avenue on the north, Central Avenue on the east and Broadway Street on the south.

The Northeast Minneapolis Arts District Mission: To support artists, arts and culture in the Northeast Minneapolis Arts District by encouraging artistic inspiration and creativity, as well as incubating arts

related projects while encouraging thoughtful economic growth, tourism, worldwide cultural artistic exchanges, political effectiveness and community connectivity.

Northeast Minneapolis Arts District Board of Directors acknowledges generous support from the Northeast Community Development Corporation, NEMAA, Sheridan Neighborhood Organization, The Chamber of Commerce, the *Northeaster*, Debbie Woodward, the California Building Company, and the scores of dedicated volunteers and donors who

began with a vision over twenty-five years ago to build and sustain the Northeast Minneapolis Arts District. Artists and business owners continue to come together and work with politicians and city leaders, stressing the economic and philanthropic values that a thriving, creative sector provides for our community.

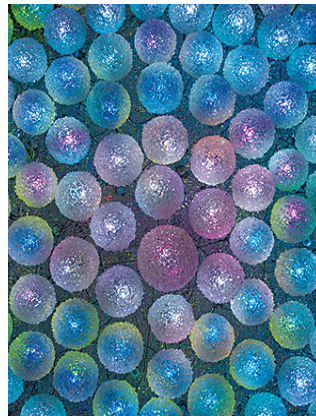
— Northeast Minneapolis Arts District Board of Directors

- 1 The Anchor Fish & Chips
- 2 The Barber Sharp
- 3 Clay Squared to Infinity
- 4 Language Central
- 1 Maeve's Cafe
- 5 Siwek Lumber & Millwork
- 6 Two12 Pottery & Gifts

- A Architectural Antiques
- B California Building
- C Casket Arts Buildings
- D Grain Belt Complex
- E Jackson Flats
- F Northrup King Building
- G Q.arma Building
- H Solar Arts Building
- J Thorp Building
- K Waterbury Building



Northeast Minneapolis Instagram and MN Community Instagram groups co-sponsored an Instameet at the Northrup King Building Saturday, Jan. 9. After touring undeveloped spaces and the boiler room, they had about an hour to visit artists and businesses who made a point to be open to greet the more than 80 who showed up. Many participants had not been to the building or Northeast before. Local businesses provided door prizes. There will be a photo contest. Middle photo: A popular challenge was to photograph the glass entry chandelier made by Dan Mather. (Photos by Margo Ashmore)



349 13th Ave. NE • 612-315-5985
Walk-ins always welcome! Appointments accepted.
Sun-Mon CLOSED • TWTu 9-7 • Fri 9-5 • Sat 8:30-3

www.languagecentral.us
2300 Central Ave. NE • 612-315-2058
Learn to speak Spanish!
Classes and conversation at 3 levels.
Chinese also available
ESL, TOEFL & Citizenship start anytime

TWO12 POTTERY & GIFT GALLERY
Jewelry: a Gift from the Heart!

THANKS FOR SUPPORTING LOCAL ARTS!

Bob Sorg

212 13th Ave NE Mpls
612-331-1556
www.two12pottery.com

Since 1933

SIWEK
LUMBER & MILLWORK, INC.

MINNEAPOLIS 612-781-3333
JORDAN 952-492-6666
siweklumber.com

OPEN STUDIOS | 12 to 4
Second Saturdays

california building
2205 California St. NE
californiabuilding.com

First Thursdays at
casketArts
Open studios 5-9pm
681 17th ave northeast
casketarts.com

Discovering NE

by Sarah Ratermann Beahan

This summer my husband and I sold our house in Seattle and embarked upon a five-month trek across the western United States looking for our next home. The Twin Cities wasn't on our list of stops, moreover we'd never heard of the Northeast Minneapolis Arts District. On a whim, we decided to take a detour and to visit friends and explore. By the end of our weeklong visit we had signed a lease—we were smitten.

Why did we decide that this was the neighborhood for us? It's a mixture of all of that we loved about the West Coast: it's progressive, has a bustling arts and culture scene, is diverse, but without the West Coast's high cost of living and horrible traffic.

But I was confused by the Arts District moniker. Finally, I asked "so where exactly is it?" I was looking for a strip of galleries to pop in for a moment, see local artists' work and meander on. I have learned that while there are a few well-curated shops in the area, window-shopping is not how the Arts District works. Engaging in art requires deliberate action.



Jackalopes by Amy Toscani — Commenting on the NE Arts District?

Like the daily special at your favorite family-owned eatery or the rotating tap at your regular watering hole, the Northeast Arts District provides open studio events so you can explore and discover new art without leaving the District. While this differs in structure from many arts communities around the country that thrive on foot traffic, there is a definite advantage.

It allows the public to connect with artists in their natural habitat. This is a unique experience—rather than viewing artists' work in a museum, gallery, restaurant or home, where the work is increasingly distant from

the artists themselves, viewing art in an open studio setting is an opportunity to contextualize the art itself.

When you walk through an arts building for an Open Studio, you'll have a chance to see art, meet the artists and see them in their workspace, which may seem awkward initially, but is ultimately inspiring. There is a sense of invading an artist's private space while simultaneously observing their creative life. It's an opportunistic way to learn about an artist's philosophy, goals and process. You get to hear what they listen to while they work (Coltrane? NPR? Train whistles? Nothing?!) and see their creations mid-process. It's a different, more intimate way to engage with art.

Many readers will have a deeper awareness of the Arts District than a new transplant to the area. As we continue to reach out and connect with our new community, we want to know what can't be missed and discover hidden gems. This intentional approach to community and art engagement is appealing.

With the *Northeast Arts Insights* page, *The Northeaster* hopes to provide a tool to make exploring and discovering those gems a little easier. —Editor

Handmade Tile
CLAY SQUARED
TO INFINITY
www.claysquared.com

300 13th Avenue NE
Mpls, MN 55413
612.379.1033
www.maeves.com

MAEVE'S
CAFE

**THINK GLOBALLY
CAFFEINATE LOCALLY**

302 13th Ave NE
(612) 676-1300

Open
Tue-Th 4 - 10pm
Fri 4 - 11pm
Sat* 10am - 11pm
Sun* 10am - 10pm
Closed Mondays

*Breakfast only Sat & Sun from 10am - Noon